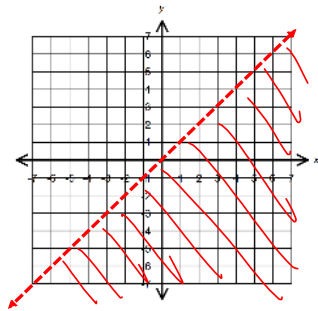


Remediation – Graphing Inequalities in Two Variables

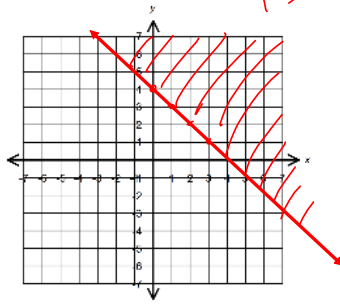
After you have watched the video from the wiki, you should try the following problems and then use the key to check your work. If you are successful on this worksheet, take the re-evaluation quiz. Be sure to follow the directions there.

Directions: Please solve the following inequalities by graphing.

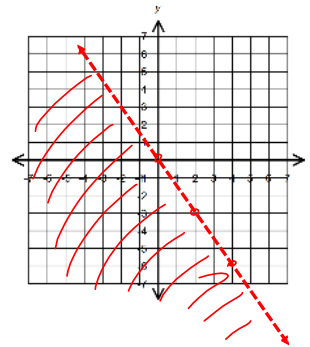
1. $y < x + 0$ $b=0$
 $m=1$



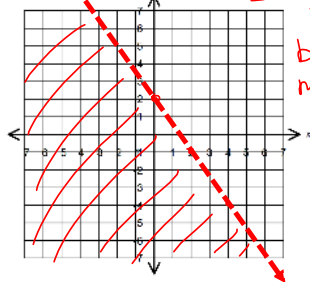
2. $y \geq -x + 4$ $b=4$
 $m=-1$



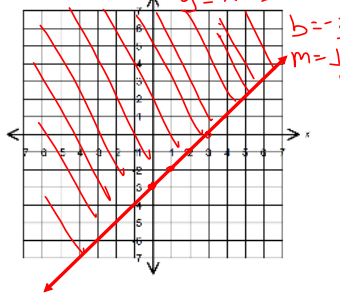
3. $\frac{2y}{2} < \frac{-3x}{2}$ $y < -\frac{3}{2}x$ $b=0$
 $m=-\frac{3}{2}$



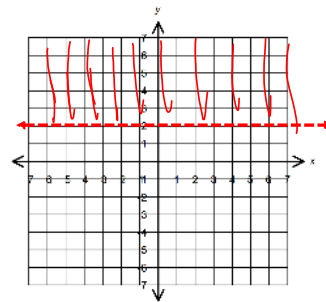
4. $2x + 3y < 6$ $3y < -2x + 6$
 $y < -\frac{2}{3}x + 2$
 $b=2$
 $m=-\frac{2}{3}$



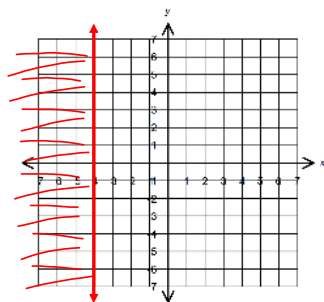
5. $-4x - 4y \leq 12$ $-4y \leq 4x + 12$
 $y \geq x - 3$
 $b=-3$
 $m=1$



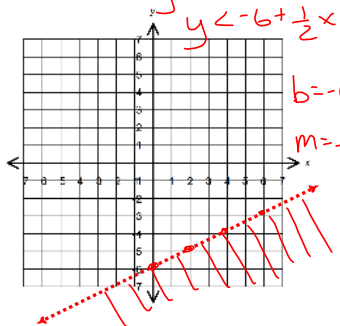
6. $y > 2$



7. $x \leq -4$



8. $25x - 50y > 300$ $-50y > 300 - 25x$
 $y < -6 + \frac{1}{2}x$
 $b=-6$
 $m=\frac{1}{2}$



9. $\frac{1}{2}y < \frac{2}{3}x + 1$ $y < \frac{4}{3}x + 2$
 $b=2$
 $m=\frac{4}{3}$

